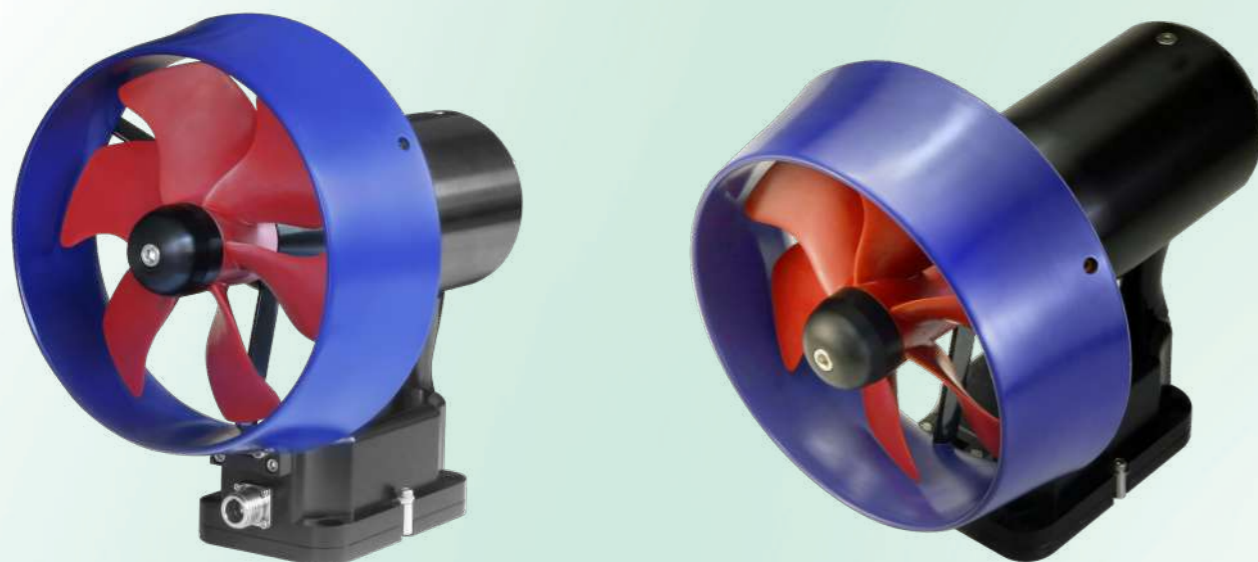


DWT135D4

Direct Drive Underwater Thruster



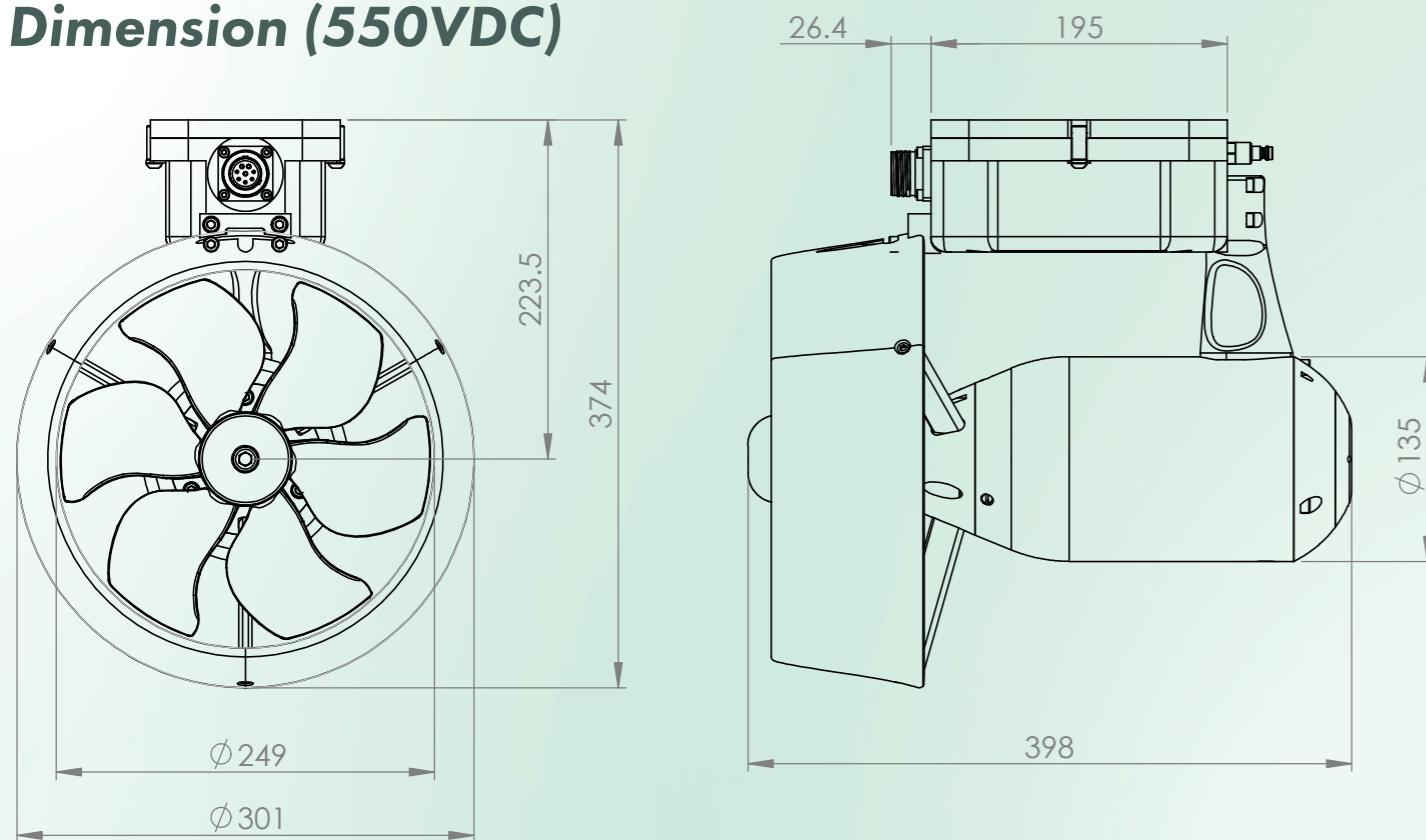
Features

- ✓ Low power and high torque
- ✓ Fast response
- ✓ Power efficiency
- ✓ Over-temperature protection, over-current protection
- ✓ Internal isolation between the power supply and signal supply system
- ✓ Good value for the price
- ✓ Customized service is available

Specification

Model	DWT35D4
Operation Voltage	550 VDC
Input Power	5,000 W
CW	90.3-95 kgf
CCW	80.8-85 kgf
Speed Control	RS485 / ± 5V / PWM
Weight in Air	17.8 kg
Weight in Water	10.3 kg
Depth	3,000m (6,000m optional)
Operation Temperature	-10~50°C
Body Material	AL 6061-T6
Connector	MSLFR08MSS
Gear Box Ratio	N/A
Shaft Seal (Rotary Seal)	Yes
Self oil compensator	Yes
Sealed	Rotary Seal

Dimension (550VDC)

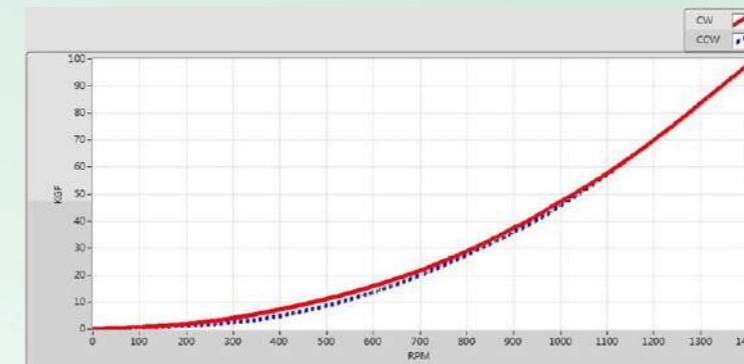


Pin Assignment

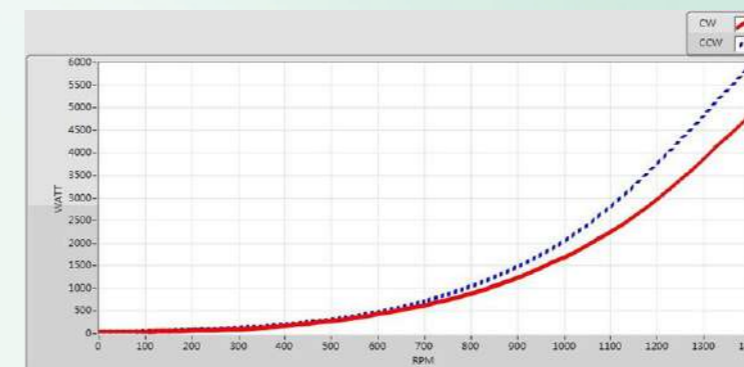
Female Inline Top View	Pin Assignment 550VDC, RS485	Male Bulkhead Top View
	1 : HGnd 2 : PE 3 : +550 VDC 4 : +15 VDC 5 : RS485-A 6 : RS485-B 7 : ISO GND 8 : N/A	
550VDC, $\pm 5V$		
	1 : HGnd 2 : PE 3 : +550 VDC 4 : +15 VDC 5 : +/-5 V 6 : N/A 7 : ISO GND 8 : N/A	
550VDC, PWM		
	1 : HGnd 2 : PE 3 : +550 VDC 4 : +15 VDC 5 : PWM Signal 6 : N/A 7 : PWM Signal GND 8 : N/A	

Performance

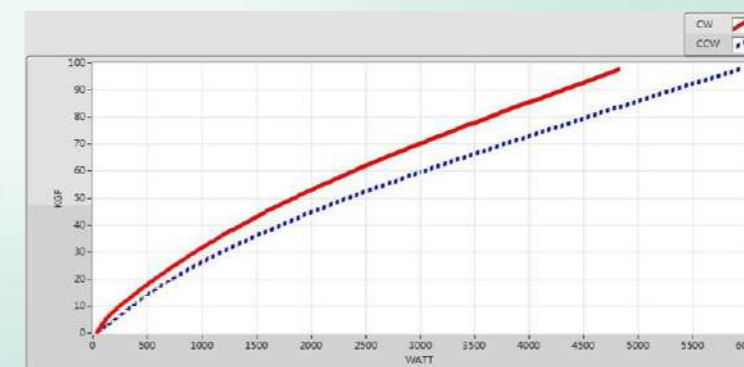
550 VDC / 5,000 W



1. RPM VS. KGF



2. RPM VS. Watt



3. Watt VS. KGF